



## CHARACTERISTICS

- ONE OR TWO PUMP MODULES
- MINIMUM LEVEL CAPACITANCE SWITCH AND VISUAL MAXIMUM LEVEL AS STANDARD
- "QUICK SWAP" PUMP MODULE: EASY OUTPUTS SUBSTITUTION WITHOUT DISRUPTION TO PIPE-WORK DURING PUMP MAINTENANCE
- COMPATIBLE WITH:
  - 02 SYSTEM
  - 26 SYSTEM
- RESERVOIR CAPACITY: 10 KG, 30 KG
- FLOW:
  - 25cm<sup>3</sup>/MIN (1,52 CU.INCH/MIN) (WITH 1 PUMP MODULE)
  - 50cm<sup>3</sup>/MIN (3,05 CU.INCH/MIN) (WITH 2 PUMP MODULES)
- WORKING TEMPERATURE: -5°C TO +50 °C
- WITH HEAT MODULE

## A COMPACT GREASE PUMP PACKAGE THAT MAINTAINS THE FEATURES, PROVEN RELIABILITY AND ACCESSORY RANGE OF THE SUMO PUMP SERIES

The mini-SUMO Pump is ideal for those applications that use Series 26 - progressive system and 02 Dual Line System. It is designed to feed oil and grease lubrication systems and is compatible with greases up to grade NLGI-2.

Up to each pump modules providing 25cc/min can be installed in tandem configuration with a generous 380bar (5511psi) pressure.

When fitted with two pump modules, the pump continues to deliver grease at maximum pressure even if one pump module becomes ineffective. Pump integrity and function can therefore be maintained until a new pump module can be quickly installed, without the need to disrupt any tubing.

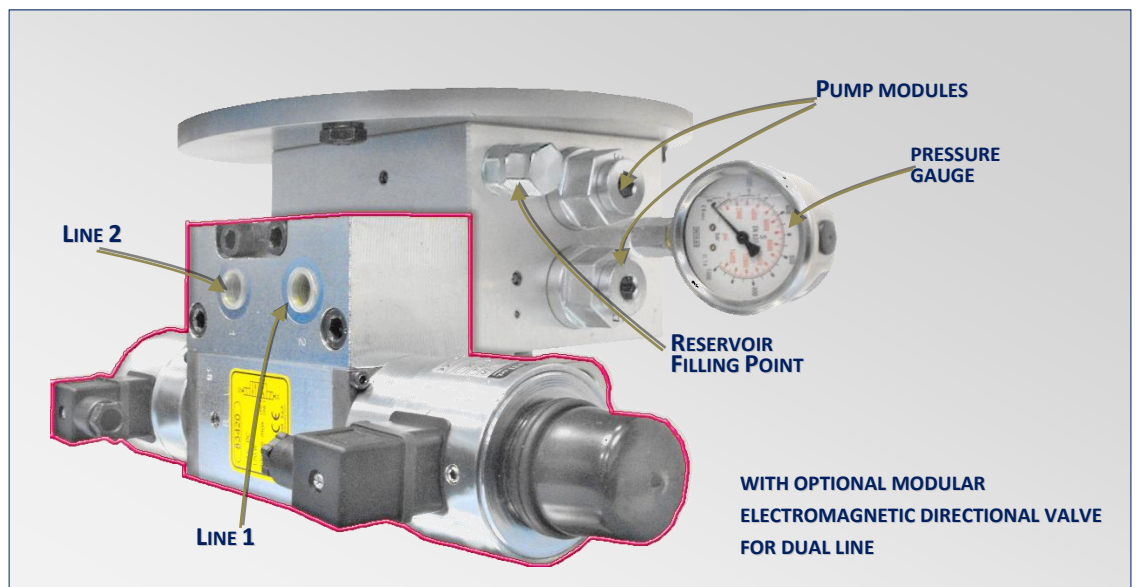
### ZERO DOWNTIME DURING PUMP MAINTENANCE

The QUICKSWAP SYSTEM allows to quickly replacement of the PUMP MODULES simply by removing and replacing with new ones. No pipe work needs to be disrupted and this means lower possibility of contamination.

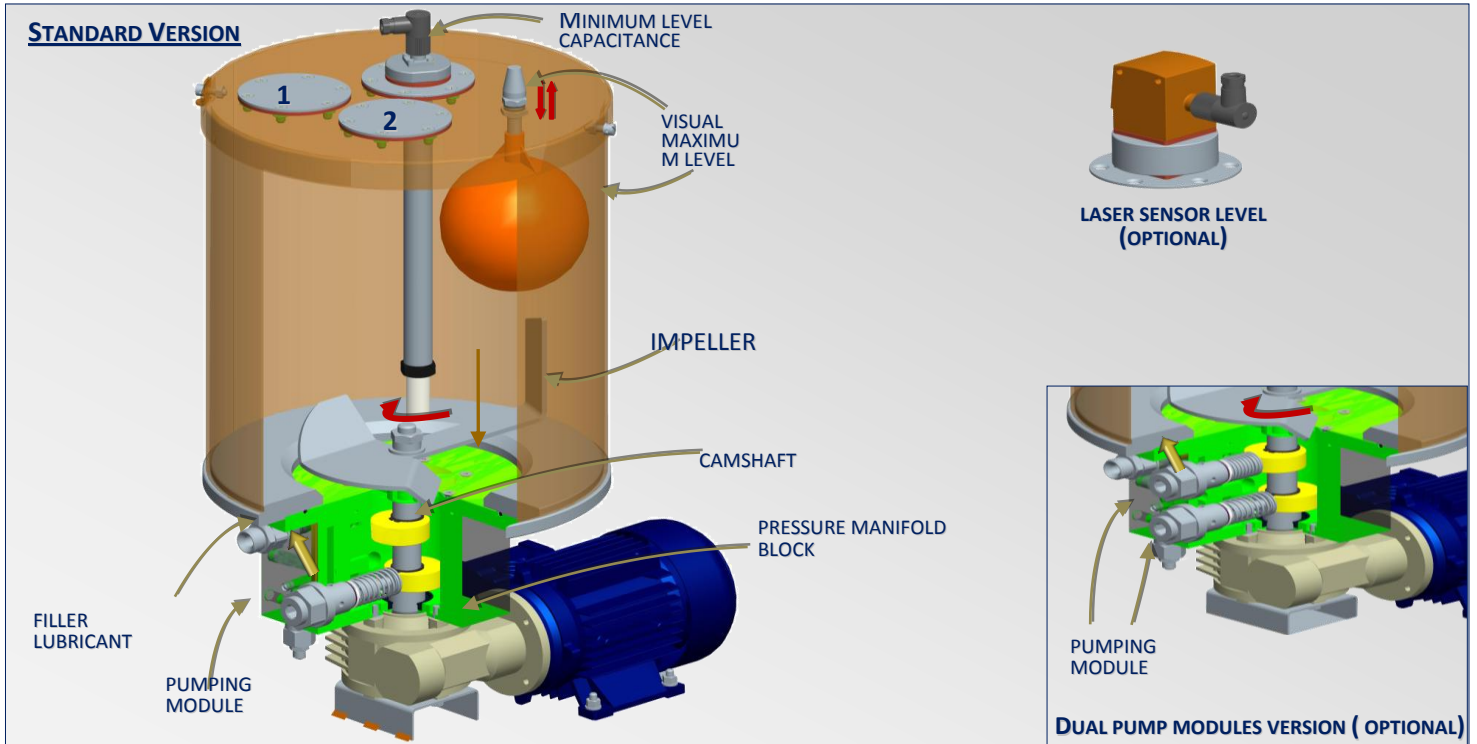


## APPLICATIONS

- HEAVY DUTY APPLICATIONS
- PULP & PAPER
- STEEL INDUSTRY
- LIGHT INDUSTRY
- LARGE MACHINE TOOLS



## OPERATING PRINCIPLE



THE LUBRICANT IS FED DIRECTLY INTO THE CAM OPERATED PUMP MODULES VIA THE PRESSURE MANIFOLD BLOCK

THE CAMSHAFT ROTATION CREATES AN ALTERNATE PISTON MOTION, ALLOWING GREASE TO BE DRAWN INTO THE PUMP ELEMENT AND PUMPED UNDER PRESSURE TOWARDS THE OUTLET.

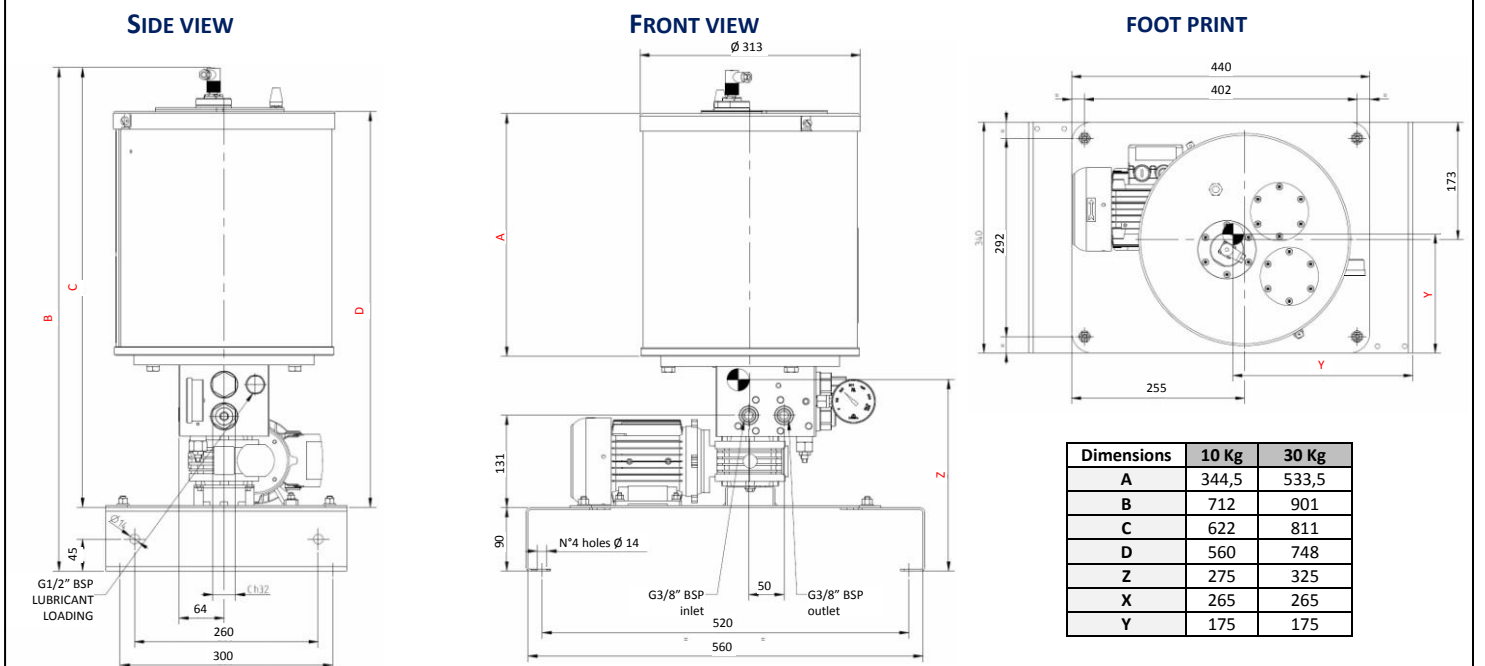
THE PUMP ELEMENT HAS A SPRING RETURN THAT ALLOWS THE PUMP MODULE TO RETURN TO ITS STARTING POSITION AND REPEAT THE PUMP CYCLE.

THE GREASE STIRRING PADDLE, LINKED TO THE CAMSHAFT, KEEPS THE GREASE FREE OF AIR POCKETS AND AVOIDS IT CLINGING TO THE SIDE OF THE RESERVOIR.

THE RESERVOIR HAS A MAXIMUM VISUAL LEVEL SENSOR LOCATED ON THE TOP PLATE.

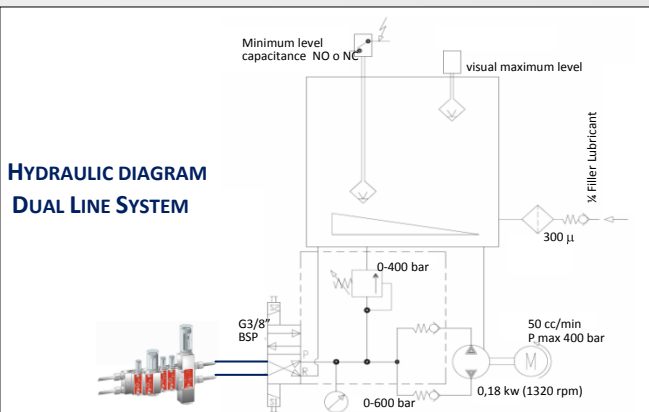
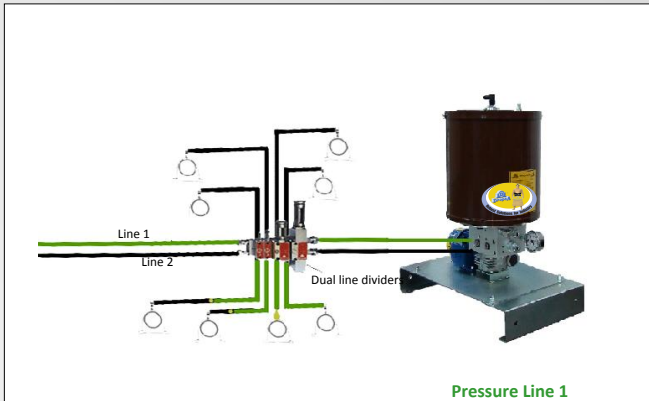
THE LUBRICANT - OIL (32 ÷ 1000 CST), OR GREASE (000 ÷ 2 NLGI), IS INTRODUCED INSIDE THE RESERVOIR THROUGH THE REFILL POINT THAT IS EQUIPPED WITH A REFILL FILTER.

## OVERALL DIMENSIONS (DRAWING NOT TO SCALE)

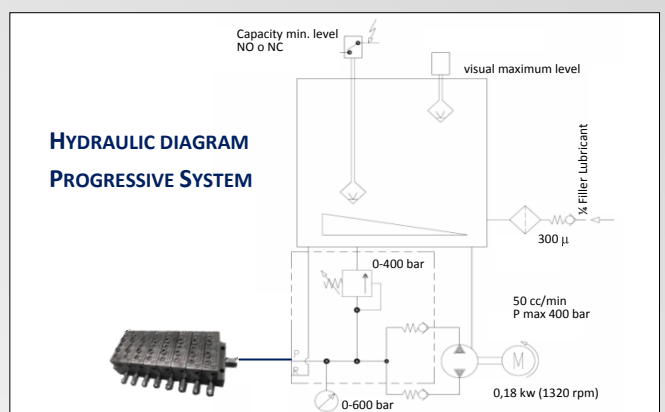
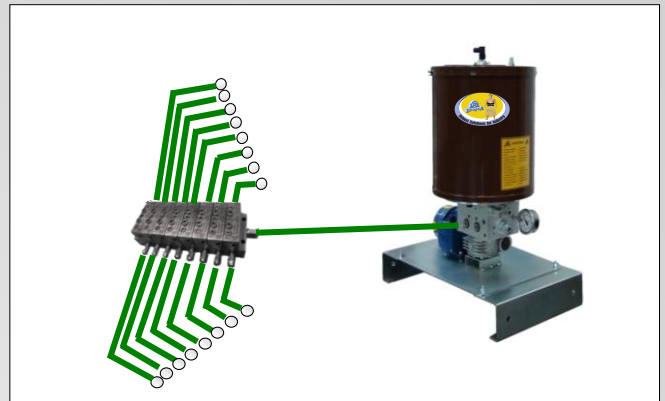


### LUBRICATION SYSTEM EXAMPLES

- LUBRICATION SYSTEMS USED ON LARGE SCALE MACHINERY TO LUBRICATE MULTIPLE POINTS ON LARGE MACHINES. THE SYSTEM LENGTH CAN EXCEED 60 METERS AND THE PRESSURE UP TO 400BAR (5511PSI) - DUAL LINE SYSTEM



- TOTAL LOSS LUBRICATION OIL OR GREASE PROGRESSIVE SYSTEM. - 26 SYSTEM



### TECHNICAL INFORMATION

<i>TECHNICAL CHARACTERISTICS</i>	
<b>Electric Motor</b>	<b>3PH:</b> 0380÷415Y 220÷240Δ - 50÷60Hz -1340 rpm 440÷480Y 255÷280Δ - 60Hz - 1610 rpm <b>1PH:</b> 110 V 50 Hz (1370 rpm) 230 V 50 Hz (1370 rpm) <b>24 V DC</b> 2800 rpm
<b>Pumping system</b>	Piston plunger type
<b>Max working pressure</b>	380 bar
<b>Reservoir capacity</b>	10 L (2,6 USA Gal) or 30 L (7,9 USA Gal)
<b>Flow</b>	25 cm <sup>3</sup> /min (1,52 cu.inch/min) one pump module 50 cm <sup>3</sup> /min (3,05 cu.inch/min) two pump modules
<b>Return Port</b>	G 3/8" BSP
<b>Outlet Port</b>	G 3/8" BSP
<b>Refil Point</b>	G 1/2" BSP
<b>Working temperature</b>	-5 ÷ + 50°C
<b>Lubricants allowed</b>	Mineral oil 32÷1000 cSt/ Grease NLGI2



## ORDERING INFORMATION

### CONTACTS

[www.dropsa.com](http://www.dropsa.com)

[sales@dropsa.com](mailto:sales@dropsa.com)

#### ITALIA

Dropsa SpA  
t. +39 02-250791  
f.+39 02-25079767

#### U.K.

Dropsa (UK) Ltd  
t. +44 (0)1784-431177  
f. +44 (0)1784-438598

#### GERMANY

Dropsa GmbH  
t. +49 (0)211-394-011  
f. +49 (0)211-394-013

#### FRANCE

Dropsa Ame  
t. +33 (0)1-3993-0033  
f. +33 (0)1-3986-2636

#### CHINA

Dropsa Lubrication  
Systems  
(Shanghai) Co., Ltd  
t. +86 (021) 67740275  
f. +86 (021) 67740205

#### U.S.A.

Dropsa Corporation  
t. +1 586-566-1540  
f. +1 586-566-1541

#### AUSTRALIA

Dropsa Australia Ltd.  
t. +61 (02)-9938-6644  
f. +61 (0)2-9938-6611

#### BRAZIL

Dropsa do Brasil Ind. e  
Com. Ltda  
t. +55 (0)11-563-10007  
f. +55 (0)11-563-19408

AVAILABLE VERSION					
PRODUCT	SETTING PRESSURE	FLOW	RESERVOIR	MOTOR	PART NUMBER
Mini-Sumo <b>GREASE</b>	300 Bar (5511psi)	25 cm <sup>3</sup> / min	10 kg	3 Ph 380÷415Y 220÷240Δ - 50÷60Hz 1340 rpm 3 Ph 440÷480Y 255÷280Δ - 60Hz - 1610 rpm	<b>2487000</b>
				1 Ph - 0,18 Kw - 110 V	<b>2487010</b>
				1 Ph - 0,18 Kw - 230 V	<b>2487011</b>
				24 V DC	<b>2487012</b>
			30 Kg	3 Ph 380÷415Y 220÷240Δ - 50÷60Hz 1340 rpm 3 Ph 440÷480Y 255÷280Δ - 60Hz - 1610 rpm	<b>2487001</b>
				1 Ph - 0,18 Kw - 110 V	<b>2487013</b>
				1 Ph - 0,18 Kw - 230 V	<b>2487014</b>
				24 V DC	<b>2487015</b>
Mini-Sumo <b>OIL</b>	300 Bar (5511psi)	25 cm <sup>3</sup> / min	10 kg	3 Ph 380÷415Y 220÷240Δ - 50÷60Hz 1340 rpm 3 Ph 440÷480Y 255÷280Δ - 60Hz - 1610 rpm	<b>2487050</b>
				1 Ph - 0,18 Kw - 110 V	<b>2487060</b>
				1 Ph - 0,18 Kw - 230 V	<b>2487061</b>
				24 V DC	<b>2487062</b>
			30 Kg	3 Ph 380÷415Y 220÷240Δ - 50÷60Hz 1340 rpm 3 Ph 440÷480Y 255÷280Δ - 60Hz - 1610 rpm	<b>2487051</b>
				1 Ph - 0,18 Kw - 110 V	<b>2487063</b>
				1 Ph - 0,18 Kw - 230 V	<b>2487064</b>
				24 V DC	<b>2487065</b>

OPTIONAL		
PRODUCT	DESCRIPTION	PART NUMBER
Hydraulic change-over	Without cycle sensor	<b>0083950</b>
Electro-magnetic Inverter KIT	24 V DC	<b>0083490</b>
	110 V AC 50/60 Hz	<b>0083491</b>
	230 V AC 50/60 Hz	<b>0083492</b>
	380 V AC 50/60 Hz	<b>0083493</b>
Electro-pneumatic inverter KIT	24 V DC	<b>0083494</b>
	24 V AC	<b>0083495</b>
	110 V AC 50/60 Hz	<b>0083496</b>
Laser Level	230 V AC 50/60 Hz	<b>0083497</b>
	Laser Sensor Assembly 30 Kg	<b>0295130</b>
	Laser Sensor Assembly 10 Kg	<b>0295179</b>
Heater module	For low temperature < -5°C (23° F)	<b>0295066</b>
Pumping module	Pump module 25cc/min	<b>0297010</b>
Oil Conversion	Min/Max Level Kit floating oil 10 Kg (66lb) + Filler plug with filter	<b>0295151+3130138</b>
	Min/Max Level Kit floating oil 30 Kg (66lb) + Filler plug with filter	<b>0295150+3130138</b>
Bracket for terminal board	Assembling on metal pallet	<b>0297033</b>

SPARE PARTS		
PRODUCT	DESCRIPTION	PARTNUMBER
Motor	3 Ph - 0,18 Kw - 230/480 V - 50-60 hz	<b>0297001</b>
	1Ph - 0,18 Kw - 110 V - 50 - 60 hz	<b>3301558</b>
	1Ph - 0,18 Kw - 230 V - 50 - 60 hz	<b>3301559</b>
	24 V - CC	<b>3301557</b>
Level Switch Kit	Min Capacitance Level (24 V cc) 10 Kg (grease)	<b>0297200</b>
	Min Capacitance Level (24 V cc) 30 Kg (grease)	<b>0295120</b>
	Min Capacitance Level (250 V ca) 10 Kg (grease)	<b>0295123</b>
	Min Capacitance Level (250 V ca) 30 Kg (grease)	<b>0295121</b>
	Max Capacitance Level 10 e 30 Kg (grease)	<b>0295170</b>
	Max. Mechanical Level 10 e 30 Kg (grease)	<b>0295100</b>
Filter	Grease filler	<b>0297007</b>
Valve	By-pass	<b>0234496</b>
Gasket	Body pump-reservoir	<b>3190485</b>
Pressure gauge	0 - 600 Bar	<b>3292167</b>
Pumping		<b>0297010C</b>